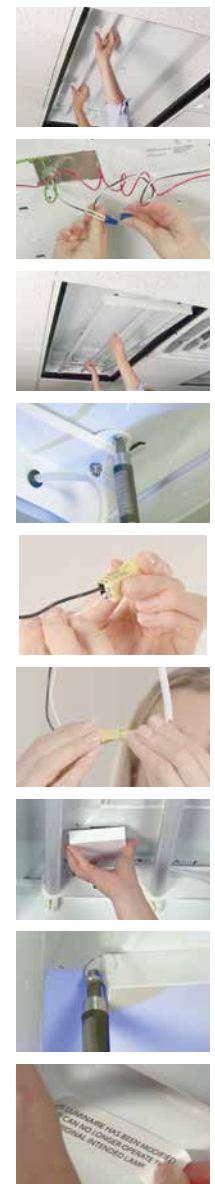




**"The quality is amazing... and I've never seen a product that goes in as quickly and as easily."**

**— Roger Goecks**  
Lakeshore Middle School

## Installs in 3 minutes or less



- 1 Turn off the power. Remove the existing fluorescent tubes.
- 2 Remove ballast cover and disconnect the ballast.
- 3 With the magnets facing the housing, place LED RetroFit into position; it will attach magnetically. Align as needed.
- 4 Secure with two of the self-tapping screws diagonally, in opposite corners.
- 5 Attach the Wago Connector to the incoming electrical line.
- 6 Connect both ends of the Wago Connector securely.
- 7 Cover disconnected wires and the electrical connection with the provided magnetic junction box cover.
- 8 Secure with the remaining two small self-tapping screws.
- 9 Apply both included labels to the fixture. Restore the power and you're done.

0 MINUTES

3 MINUTES

### Powerful magnets make for fast, hands free installation

There's simply nothing else like this feature on the market. Once our RetroFit is lifted into place, the magnets hold to the top of the fixture, so you can use both hands to quickly finish the installation.



## Benefits

- Designed to preserve the optical output and aesthetics of your fixture
- Installs in minutes
- No need to break into the ceiling plenum
- Universal 120-277 driver
- 7-year warranty
- Shatterproof; safe for food service applications
- 85,000 hours rated life
- DLC listed

## Markets and Applications

- Health Care
- Education
- Commercial
- Industrial
- Retail

## REQUEST A FREE 60 DAY TRIAL TO SEE JUST HOW EASY UPGRADING CAN BE

Visit [www.litetronics.com/led-retrofit/60-day-trial](http://www.litetronics.com/led-retrofit/60-day-trial) to submit a request for your free 60 day trial.

Our experienced team of distributors have supported Litetronics retrofit installs utilizing various state incentives. They can help you specify the best retrofit solutions in the most efficient manner possible.

Dimming and bi-level switching versions are available, as are emergency battery backup options. Call us if you don't see what you need.



# LITETRONICS®

[www.litetronics.com](http://www.litetronics.com)

customerservice@litetronics.com | 1-800-860-3392

# LITETRONICS®

INNOVATION. SIMPLIFIED.

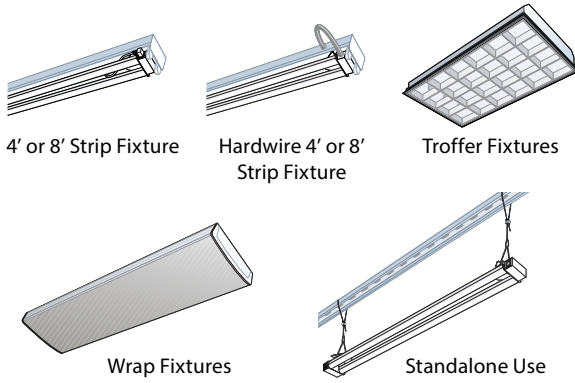
## LED RETROFIT

Convert existing fixtures to LED lighting.  
Save up to 60% in energy costs.  
Install in 3 minutes or less.



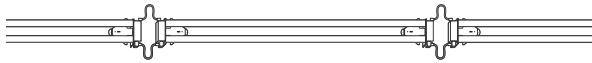
Featuring Our Dimmable and Connectable  
1'x4' RetroFit Line!

## Litetrionics makes it easy to upgrade your...

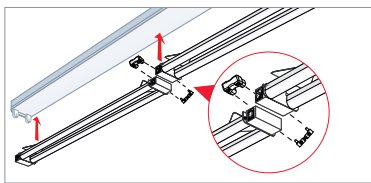


### 1' x 4' Connectivity

Cover more ground with the ability to daisy chain multiple kits together, utilizing just one power source. In addition, apply the new 0-10V Dimmer Jumper to add dimming functionality across the entire chain of units.



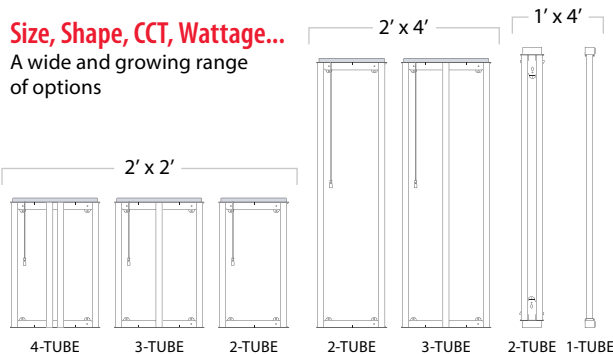
WATTS	DAISY CHAIN	TOTAL POTENTIAL LENGTH WITH... DIRECT CONNECT	8" CORD	4' CORD
16	36	144'	167'	284'
32	18	72'	83'	140'
45	12	48'	55'	92'



RetroFit power (G) and dimming (H) direct connectors shown in operation

### Size, Shape, CCT, Wattage...

A wide and growing range of options



### 1' x 4' Connectable

TYPE	WATTS	ORDERING CODE	CCT (K)	AVERAGE RATED LIFE	RETROFIT LUMENS*	LUMINAIRE LUMENS*
1-TUBE	16	* RF16UQT135C	3500	85,000	2,200	1,725
		* RF16UQT140C	4000			
		* RF16UQT150C	5000			
2-TUBE	32	* RF32UQT135C	3500	85,000	4,400	3,450
		* RF32UQT140C	4000			
		* RF32UQT150C	5000			
2-TUBE	45	* RF45UQT135C	3500	85,000	6,300	4,800
		* RF45UQT140C	4000			
		* RF45UQT150C	5000			

### 1' x 4' 0-10V Dimmable Connectable \*\*

TYPE	WATTS	ORDERING CODE	CCT (K)	AVERAGE RATED LIFE	RETROFIT LUMENS*	LUMINAIRE LUMENS*
1-TUBE	16	* RF16UQT135CDL	3500	85,000	2,200	1,725
		* RF16UQT140CDL	4000			
		* RF16UQT150CDL	5000			
2-TUBE	32	* RF32UQT135CDL	3500	85,000	4,400	3,450
		* RF32UQT140CDL	4000			
		* RF32UQT150CDL	5000			

### 1' x 4' Hardwire

TYPE	WATTS	ORDERING CODE	CCT (K)	AVERAGE RATED LIFE	RETROFIT LUMENS*	LUMINAIRE LUMENS*
2-TUBE	32	* RF32UHT140	4000	85,000	4,400	3,450
2-TUBE	45	* RF45UHT140	4000	85,000	6,300	4,800

(Product must be hardwired to power source)

### 1' x 4' 0-10V Dimmable \*\*

TYPE	WATTS	ORDERING CODE	CCT (K)	AVERAGE RATED LIFE	RETROFIT LUMENS*	LUMINAIRE LUMENS*
2-TUBE	32	* RF32UQT140DL	4000	85,000	4,400	3,450

### 2' x 2'

TYPE	WATTS	ORDERING CODE	CCT (K)	AVERAGE RATED LIFE	RETROFIT LUMENS*	LUMINAIRE LUMENS*
2-TUBE	22	* RF22UQT235	3500	85,000	2,975	2,375
		* RF22UQT240	4000			
		* RF22UQT250	5000			
3-TUBE	32	* RF32UQT235	3500	85,000	4,300	3,450
		* RF32UQT240	4000			
		* RF32UQT250	5000			
4-TUBE	52	* RF52UQT235	3500	85,000	7,000	5,600
		* RF52UQT240	4000			
		* RF52UQT250	5000			

\* Listed by the The DesignLights Consortium® (DLC 4.1) as a high quality, high efficiency LED product for the commercial sector.

### 2' x 2' 0-10V Dimmable

TYPE	WATTS	ORDERING CODE	CCT (K)	AVERAGE RATED LIFE	RETROFIT LUMENS*	LUMINAIRE LUMENS*
2-TUBE	32	* RF32UQT235DL	3500	85,000	4,300	3,450
		* RF32UQT240DL	4000			
		* RF32UQT250DL	5000			

### 2' x 2' Bi-Level Switching

TYPE	WATTS	ORDERING CODE	CCT (K)	AVERAGE RATED LIFE	RETROFIT LUMENS*	LUMINAIRE LUMENS*
2-TUBE	32	* RF32UQT235B	3500	85,000	4,300	3,450
		* RF32UQT240B	4000			
		* RF32UQT250B	5000			

### 2' x 4'

TYPE	WATTS	ORDERING CODE	CCT (K)	AVERAGE RATED LIFE	RETROFIT LUMENS*	LUMINAIRE LUMENS*
2-TUBE	32	* RF32UQT435	3500	85,000	4,150	3,450
		* RF32UQT440	4000			
		* RF32UQT450	5000			
3-TUBE	50	* RF50UQT435	3500	85,000	6,500	5,400
		* RF50UQT440	4000			
		* RF50UQT450	5000			

### 2' x 4' 0-10V Dimmable

TYPE	WATTS	ORDERING CODE	CCT (K)	AVERAGE RATED LIFE	RETROFIT LUMENS*	LUMINAIRE LUMENS*
2-TUBE	32	* RF32UQT435DL	3500	85,000	4,150	3,450
		* RF32UQT440DL	4000			
		* RF32UQT450DL	5000			
3-TUBE	50	* RF50UQT435DL	3500	85,000	6,500	5,400
		* RF50UQT440DL	4000			
		* RF50UQT450DL	5000			

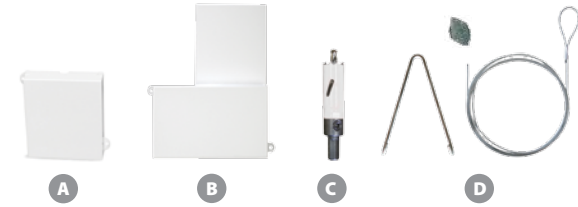
### 2' x 4' 120V Dimmable

TYPE	WATTS	ORDERING CODE	CCT (K)	AVERAGE RATED LIFE	RETROFIT LUMENS*	LUMINAIRE LUMENS*
3-TUBE	50	RF50AQ435D	3500	85,000	6,500	5,400
		RF50AQ440D	4000			
		RF50AQ450D	5000			

### 2' x 4' Bi-Level Switching

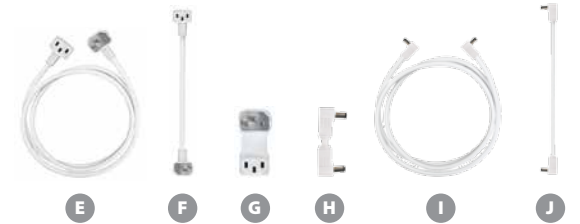
TYPE	WATTS	ORDERING CODE	CCT (K)	AVERAGE RATED LIFE	RETROFIT LUMENS*	LUMINAIRE LUMENS*
3-TUBE	50	* RF50UQT435B	3500	85,000	6,500	5,400
		* RF50UQT440B	4000			
		* RF50UQT450B	5000			

\*\* New products as of May 2017



### Retrofit Accessories

IMAGE	ORDERING CODE	FEATURES AND BENEFITS
A	RFAJBS-1 **	Provides space for wiring when needed †
B	RFAJBL-1	Provides extra space for wiring when needed
C	RFAHS-20	Drill a 20mm hole through metal for electrical wiring of Retrofit †
D	RFAXPVL5	Ready-to-use kit for suspending for standalone use †



### Connecting accessories for power/dimming

IMAGE	ORDERING CODE	FEATURES AND BENEFITS
E	RFAC-4FT	Power cable for Retrofits up to 4' apart †
F	RFAC-8IN	Power cable for Retrofits up to 8" apart †
G	RFAC	Molded power jumper connects RetroFits end-to-end †
H	RFALVC **	0-10V dimmer jumper connects RetroFits end-to-end †
I	RFALVC-4FT **	0-10V dimmer cable for Retrofits up to 4' apart †
J	RFALVC-8IN **	0-10V dimmer cable for RetroFits up to 8" apart †



### Emergency Battery Backup & Accessories

IMAGE	ORDERING CODE	WATTS	VOLTS	ACCESSORY USE
K	EB23UQ **	23	120-277	23W 120-277V WH QC Emergency Battery Backup
K	EBA45-12V **	12	-	Emergency Battery Replacement 4500mAh 12V

(See enlighten sheet for compatible retrofits)

† Accessory applies to 1'x4' Retrofit only.