

LED EMERGENCY LIGHT UNIT

2 SQUARE 1.2W LAMPS

PROJECT:	
CATALOG #	
TYPE:	DATE:

DESCRIPTION

The Litetronics LED Emergency Light delivers dependable, code compliant egress lighting in a modern, space efficient design. Its dual adjustable square lamps provide bright, uniform illumination ensuring clear visibility during power loss.

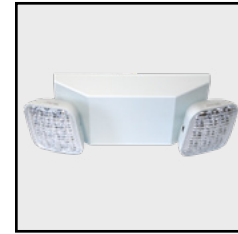
Built with a durable housing and universal wall/ceiling mounting, the unit installs quickly and minimizes labor—an advantage over bulkier models. A 90-minute UL924-compliant battery backup and damp location rating support reliable performance.

Featuring long-life LEDs, simplified maintenance, and clean architectural styling, the LED Emergency Light outperforms legacy incandescent units while meeting applicable safety and energy-efficiency requirements.



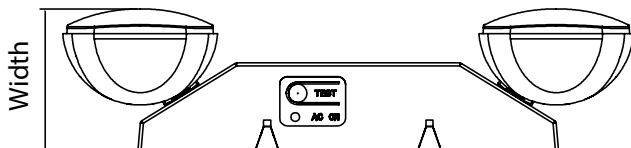
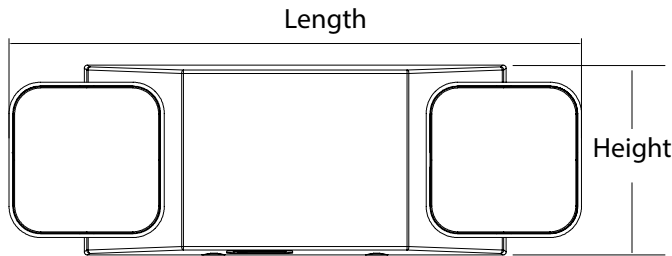
MARKETS

- Commercial & Office
- Schools, Campuses, Day Care
- Car Dealership
- Retail
- Event Centers
- Warehouses, manufacturing plants, distribution centers
- Hospitality
- Healthcare



DIMENSIONS / WEIGHT

Order Code	Length	Width	Height	Weight
EMLU2SQ	13.7"	4.52"	3.46"	1.24 lbs.



FEATURES & ACCESSORIES

- 120-277V
- Damp location rated
- 6500K CCT
- UL924 Certified
- 5-Year Warranty
- Wall mounted
- Adjustable lamps
- Manual push button testing
- Ni-Cad Battery

CERTIFICATIONS



SPECIFICATIONS

Warranty: 5 years

PERFORMANCE

Operating temp: 32°F to 104°F (0°C to 40°C)

Efficacy (LPW): N/A

CRI: ≥80

ELECTRICAL

Input voltage: 120-277V

Input frequency: 50/60Hz

Battery Type: Ni-Cad

OPTICAL

Lens: Polycarbonate

UGR: N/A

PHYSICAL

Finish: N/A

Color: White

Housing: Plastic

INDUSTRY STANDARDS/RATINGS

IP: 20

Location: Damp

UL: UL924

FCC: Yes

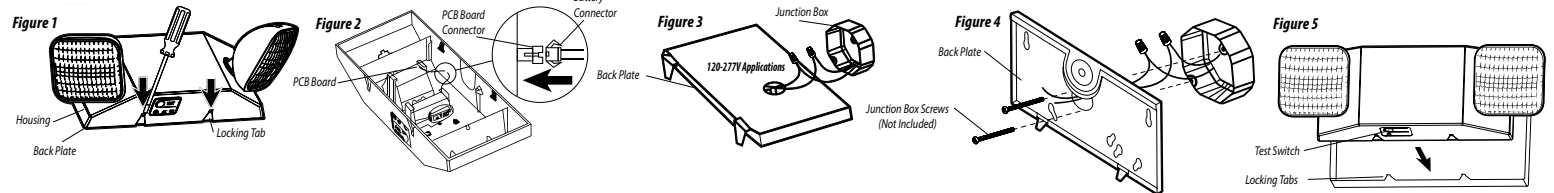
ORDERING INFORMATION

Main Fixture

Ordering Code	Description	Watts	Volts	CCT (K)
EMLU2SQ	LED Emergency Light Unit 2 Square 1.2W Lamps	1.2	120-277V	6500

PRODUCT OVERVIEW AND INSTALLATION

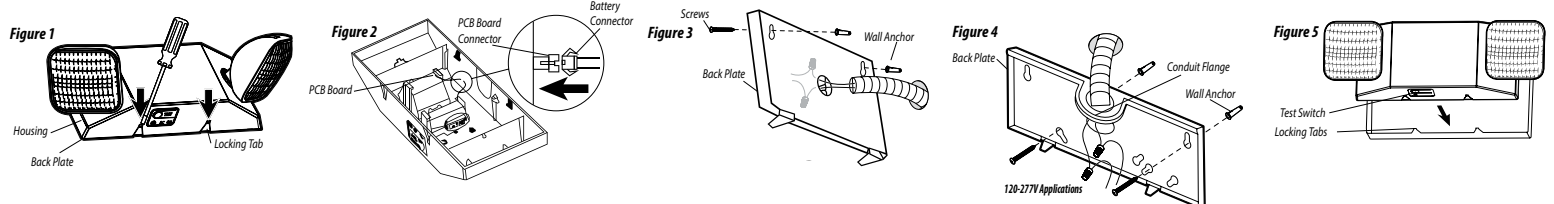
JUNCTION BOX INSTALLATION



With a flat screwdriver, release the locking tabs located at the bottom of the emergency light. Connect the battery to the PCB board, feed the fixture wires through the backplate and connect them to the power supply using wire nuts. Attach the backplate to the junction box using junction box screws (not included). Align the locking tabs and push the housing directly onto the backplate.

WALL INSTALLATION

USE FLEXIBLE CONDUIT ONLY.



With a flat screwdriver, release the locking tabs located at the bottom of the emergency light. Connect the battery to the PCB board. Using the backplate as a template, mark, and drill two installation holes on the wall at the desired installation location. Insert wall anchors into the holes. Attach the backplate to the wall by inserting screws through the backplate and into the wall anchors. Route the wires through the rear of the backplate or conduit flange and make the conduit connection. Align the locking tabs and push the housing directly onto the backplate.

Disclaimer: Specifications are subject to change without notice. While Litetronics makes every effort to ensure accuracy, we do not guarantee the completeness or reliability of the information provided. For the most current product data, please visit www.litetronics.com.