

LITETRONICS®

7 Button AC Powered Wall Switch (BCS05)

Installation Instructions



Switch



Wall plate with mount screws



Wire Nuts



Screws



WHAT COMES IN THE BOX

Switch
Wall plate with mount screws
Wire nuts (3)

Screws (2)
Installation instructions

TOOLS NEEDED

Phillips and flathead screwdriver

ATTENTION

1. Please check if there is any damage during shipping. If so, please contact Litetronics customer service.
2. Please read the installation instruction carefully to check whether all the accessories are included.
3. After confirmation, install the switch according to installation steps.

Tip: This Bluetooth device is compatible with Litetronics lighting control system only.

WARNINGS

Risk of fire or electric shock. The 7 Button AC Powered Wall Switch installation requires knowledge of electrical systems. If not qualified, do not attempt installation. Contact a qualified electrician.

Be certain electrical power is OFF before and during installation and maintenance.

Risque d'incendie ou d'électrocution. L'installation de l'interrupteur mural à 7 boutons alimenté en courant alternatif nécessite une connaissance des systèmes électriques. Si vous n'êtes pas qualifié, ne tentez pas l'installation. Contactez un électricien qualifié.

Assurez-vous que l'alimentation électrique est coupée avant et pendant l'installation et l'entretien.

SAFETY INSTRUCTIONS

WHEN USING ELECTRICAL EQUIPMENT, BASIC SAFETY PRECAUTIONS SHOULD ALWAYS BE OBSERVED.

READ CAREFULLY BEFORE INSTALLING FIXTURE. RETAIN THESE INSTRUCTIONS FOR FUTURE REFERENCE.

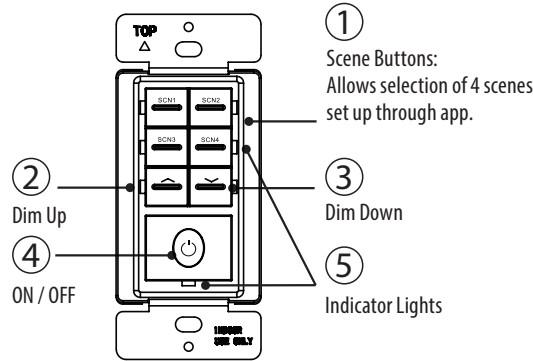
Litetronics switches must be wired in accordance with the National Electrical Code and all applicable local codes.

7 Button AC Powered Wall Switch must be connected to a wiring system with an equipment – grounding conductor.

Make sure the supply voltage is the same as the rated switch voltage.

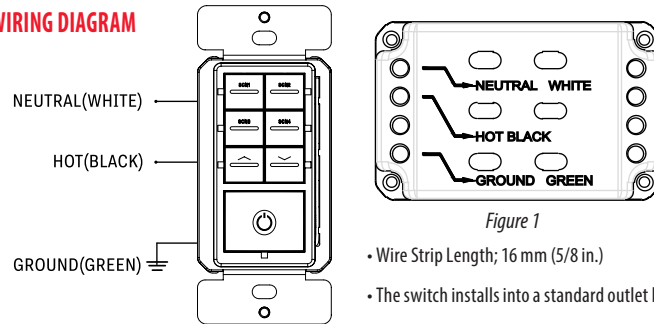
To prevent wiring damage or abrasion, do not expose wiring to edges of sheet metal or sharp objects.

SWITCH FUNCTIONALITY



Note: Install LiteSmart App first and make sure light fixtures to be paired are added to the App before setting the switch.

WIRING DIAGRAM



WIRING

1. Turn the power off.
2. Remove wall plate, switch mounting screws from existing switch.
3. Carefully remove the existing switch from the switch box. DO NOT disconnect the wires.
4. There are three wiring connections on the switch, these are marked HOT, NEUTRAL, GROUND.
5. Disconnect the wires from the existing switch.
6. Connect the green wire to the GROUND terminal. Connect the white wire to the terminal marked NEUTRAL. Connect the black wire to the terminal marked HOT. See Figure 1.
7. Check connections to be sure they are tight and no bare conductors are exposed.
8. Insert the switch into the outlet box carefully.
9. Mount the switch to the box using the supplied screws.
10. Attach the wall plate and replace plate screws.
11. Restore power to the circuit breaker and test the system.

Tip: This Bluetooth device is compatible with Litetronics LiteSmart lighting control system only.

DOWNLOAD THE LITESMART APP



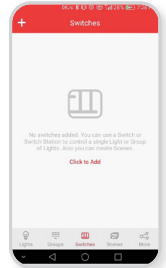
LITESMART

1. Download the LiteSmart mobile app for iOS or Android. Scan QR code below.

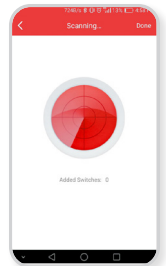


SWITCH SET UP

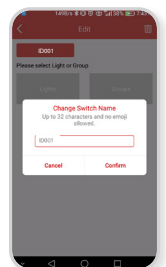
1. Go to the **Switches** page and tap + icon to add a new switch.



2. LiteSmart will scan for recognizable switches.
3. On the switch, press buttons ② and ③ (see switch functionality illustration) together over 2 seconds to enter pairing mode or activate reset function. This switch can be rescanned in the next 30 seconds.
4. Tap **Done**



5. Choose the new switch by tapping on the **Gear/settings icon**.
6. Rename the switch by tapping on the name. Rename and tap **Save**.



Flip to continue

SWITCH SET UP - CONTINUED

- Next, choose the individual lights or group that the switch should be applied to. Then tap **Next Step**.



- Select scenes to be used via the switch, then tap **Save**.
- The fixtures will flash 3 times to confirm the settings have been saved.



- From the switch, you can now power on/off, brighten or dim, or select from the **4 Preset Scenes**.



Thank you for choosing

LITETRONICS®

6969 W. 73rd Street

Bedford Park, IL 60638

WWW.LITETRONICS.COM

CustomerService@Litetronics.com or 1-800-860-3392



The information and product specifications contained in these instructions are based upon data believed to be accurate at the time of printing. This information is subject to change without notice and without incurring liability. If you have questions regarding specific product details, please contact us at 800-860-3392 or via email at customerservice@litetronics.com. To check for an updated version of these instructions, please visit www.litetronics.com.