

Wireless Bluetooth Switch (BCS03)

Installation Instructions



Screws



Batteries



Switch



Optional holder
for existing
switch box



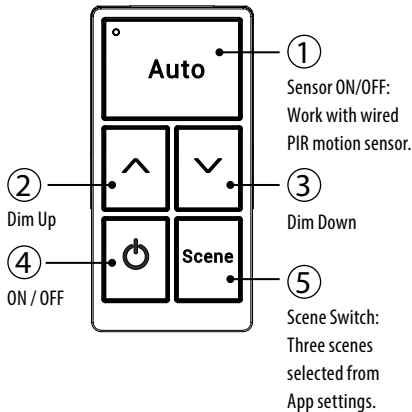
Holder for
flat surface
mounting
(no switch box)



Wall plate

SWITCH FUNCTIONALITY

Fixtures can be controlled wirelessly through a remote Bluetooth switch, which can be wall mounted or remotely located for convenience.



WHAT COMES IN THE BOX

Switch	CR2032 batteries (2)
Optional holder for existing switch box	Screws (4)
Holder for flat surface mounting (no switch box)	Anchors (2)
Wall Plate	Installation Instructions

TOOLS NEEDED

Phillips and flathead screwdriver
Power drill

ATTENTION

1. Please check if there is any damage during shipping. If so, please contact Litetronics customer service.
2. Please read the installation instruction carefully to check whether all the accessories are included.
3. After confirmation, install the switch according to installation steps.

Tip: This Bluetooth device is compatible with Litetronics lighting control system only.

Important: Battery model #CR2032 can be used for 5 years based on twice a day usage.

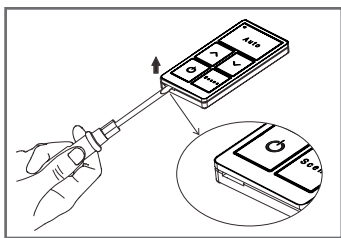
Note: Do not use in a metal region or strong, electromagnetic wave area.

INSTALLATION

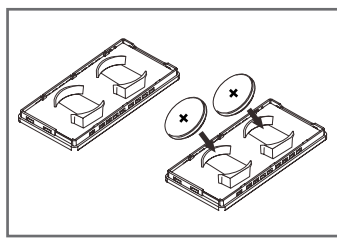
1. Battery installation - [Page 2](#)
2. Wall surface installation - [Page 2](#)
3. Wireless Bluetooth switch set up - [Page 3](#)

Note: Install LiteSmart App before setting the switch.

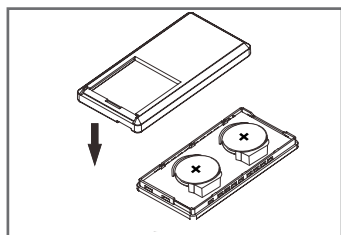
BATTERY INSTALLATION



1. Open the back cover of the remote controller with a flat screw driver.



2. Install two CR2032 batteries, ensure that battery etching is facing up for proper installation.



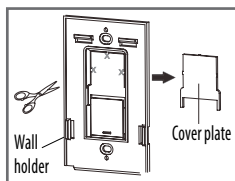
3. Attach the cover.

Troubleshooting

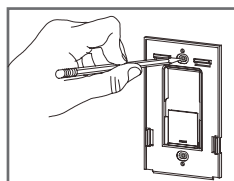
- When the voltage is less than 2.6V, press any buttons and the red light flashes.

WALL SURFACE INSTALLATION

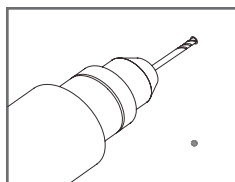
1. Remove the cover plate carefully with scissors.



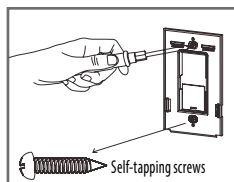
2. Mark hole position as required for installation.



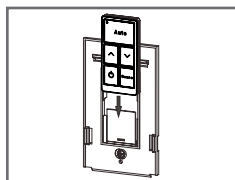
3. Drill two holes with power drill.



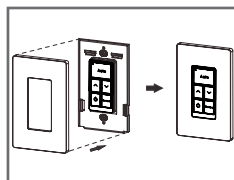
4. Attach the bracket with supplied self-tapping screws.



5. Slide remote controller into the bracket.



6. Attach the wall plate.



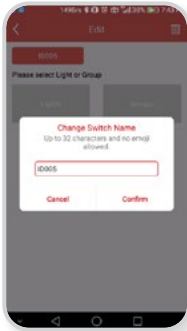


LITESMART

1. Download the LiteSmart mobile app for iOS or Android. Scan QR code below.



5. Choose the new switch by tapping on the **Gear/settings icon**.
6. Rename the switch by tapping on the name. Rename and tap **Save**.



7. Next, choose the individual lights or group that the switch should be applied to. Then tap **Next Step**.



1. Go to the **Switches** page and tap + icon to add a new switch.



2. LiteSmart will scan for recognizable switches.
3. On the switch, press buttons ① and ② together over 2 seconds to enter pairing mode or activate reset function. This switch can be rescanned in the next 30 seconds.



4. Tap **Done**.

8. Select three scenes to be used via the switch, then tap **Save**.
9. The fixtures will flash 3 times to confirm the settings have been saved.



10. From the switch, you can now power on/off, brighten or dim, or select from the preset **Scene**.



Thank you for choosing
LITETRONICS®

6969 W. 73rd Street

Bedford Park, IL 60638

WWW.LITETRONICS.COM

CustomerService@Litetronics.com or 1-800-860-3392



The information and product specifications contained in these instructions are based upon data believed to be accurate at the time of printing. This information is subject to change without notice and without incurring liability. If you have questions regarding specific product details, please contact us at 800-860-3392 or via email at customerservice@litetronics.com. To check for an updated version of these instructions, please visit www.litetronics.com.