

PROJECT:	
CATALOG #	
TYPE:	DATE:

LED NSF HIGH BAY

DESCRIPTION

Certain environments require a heightened level of sanitation. These areas can often include grease, oil, smoke, food particles or dust – all contributing to factors that could lead to bacteria growth and contamination. To meet strict sanitary requirements, an area may be subject to daily wash downs and special cleaning schedules.

The LED NSF High Bay is the perfect solution to demanding environments. As an NSF (National Sanitation Foundation) certified product, with an IP69K rating, this luminaire is dust tight and resistant to steam-jet cleaning. It's smooth, stylish outer shell eliminates exposed hardware and crevices where moisture and bacteria can accumulate to cause contamination issues. It is also corrosion resistant – powder coated with a stainless steel mounting ring, making it beneficial in areas where salt or chemicals are present.

As a direct replacement for HID, metal halide or fluorescent bulbs, this LED high bay represents up to a 70% reduction in energy costs. With a 50,000 hour rated life, backed by a 5 year warranty, you're guaranteed years of excellent LED light for visual acuity, low maintenance and dramatic energy savings.

FEATURES

- NSF rated
- IP69K
- Non-toxic corrosion resistant aluminum body
- Polycarbonate shatterproof lens
- Smooth, easy to clean body
- No exposed hardware
- Wet location rated
- 6' cord
- 140 LPW
- Safety Cable pre-installed
- 0-10V dimming
- 50,000 hour rated life
- 5 year warranty
- DLC 5.1 Premium



APPLICATIONS

- Food & beverage processing
- Farming & agricultural facilities
- Commercial kitchens
- Power plants
- Marinas
- Manufacturing facilities
- Cold / freezer spaces

MOUNTING

- Suspended

CERTIFICATIONS



SPECIFICATIONS

Life (@L70): 50,000 hours

Warranty: 5 years

PERFORMANCE

Operating temp: -40°F to 113°F (-40°C to 45°C)

Efficacy (LPW): 140 LPW

CRI: 80

ELECTRICAL

Input voltage: 120-277V

Input frequency: 50/60Hz

PF: ≥0.9

THD: N/A

Surge protection: 4KV

Dimming: 0-10V

Minimum dimming: N/A

Aux. Power Tap: N/A

Driver CL: N/A

Whip/Cord: SJTW/SJOW, 300V, 18AWG, 105°C

Sensor: N/A

OPTICAL

Beam: 115°

Lens: Polycarbonate

UGR: N/A

PHYSICAL

Finish: Powder Coat

Color: White

Housing: Aluminum Alloy

INDUSTRY STANDARDS/RATINGS

IP: 69

IK: N/A

Location: Wet

IC: N/A

UL: Yes

ETL: No

NSF: Splash Zone 2 Rated

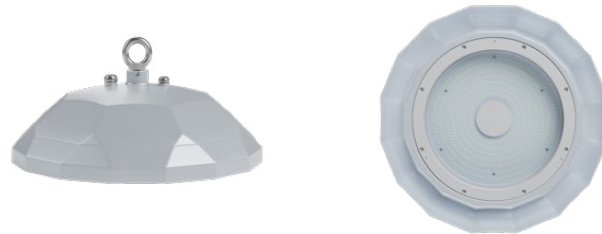
FCC: Yes

RoHS: Yes

DLC: 5.1 Premium

DIMENSIONS / WEIGHT

ORDER#	LENGTH	HEIGHT	WEIGHT
HBF10040	17.08"	7.56"	15.43 lbs
HBF10050	17.08"	7.56"	15.43 lbs
HBF15040	17.08"	7.56"	15.43 lbs
HBF15050	17.08"	7.56"	15.43 lbs



MOUNTING

Standard: Ring mounting

Suspended mounting

12MM Rigid with stainless steel all-thread

ACCESSORIES

Emergency Battery Backup

ORDERING INFORMATION

ORDERING CODE	DESCRIPTION	WATTS	VOLTS	CCT (K)	LUMENS
HBF10040	100W LED NSF High Bay in 4000K	100	120-277	4000	14,000
HBF10050	100W LED NSF High Bay in 5000K	100	120-277	5000	14,000
HBF15040	150W LED NSF High Bay in 4000K	150	120-277	4000	21,000
HBF15050	150W LED NSF High Bay in 5000K	150	120-277	5000	21,000

TR01



EB20



EBAM



ACCESSORIES

ORDERING CODE	DESCRIPTION	USAGE
TR01	Test Remote Control	Used for testing and demonstrating the functionality of EB20 emergency battery backup integrated products. <ul style="list-style-type: none"> • Only one remote required per area, building or site as necessary.
EB20	20W Emergency Battery Backup	Supplies 90 minutes of battery backup to the fixture in times of a power outage. <ul style="list-style-type: none"> • This unit is compatible with fixtures using >81W and <199W. • This unit is not currently compatible with sensor usage. • The unit must be ordered with indicator module EBAM , and Test Remote TR01.
EBAM	Adhesive-mounted Indicator Module	In drywall/open ceiling applications, this unit connects to the EB10/EB20 and is mounted via adhesive, where it displays the unit's current status of operation.

**Note: Emergency battery backup and indicator module need to be mounted in a wet location.*

ACCESSORIES

Listing of suggested chemicals and sanitizers to help protect against corrosion.

CHEMICAL	DESCRIPTION
Hypochlorites	Highly effective in killing microbes and destroy microbe DNA.
Chlorine Dioxide	Highly effective against bacteria, viruses and fungi as it reacts with proteins and fatty acids to break down the organisms structurally.
Iodophors	Effective as both a sanitizer and a disinfectant, the real advantage that Iodophors have over other chemicals is its sustained release effect. It means that microbes are killed steadily over an extended period of time, ensuring a surface stays clean and sanitized for longer.
Peroxyacetic Acid (PAA)	Effective against most microorganisms, PAA-based sanitizers are environmentally friendly and less corrosive to equipment.
Quaternary Ammonium Compounds (QACs or Quats)	Usually odorless, non-staining, non-corrosive and relatively non-toxic