

LITETRONICS®

VIVID LED FRAME

Installation Instructions

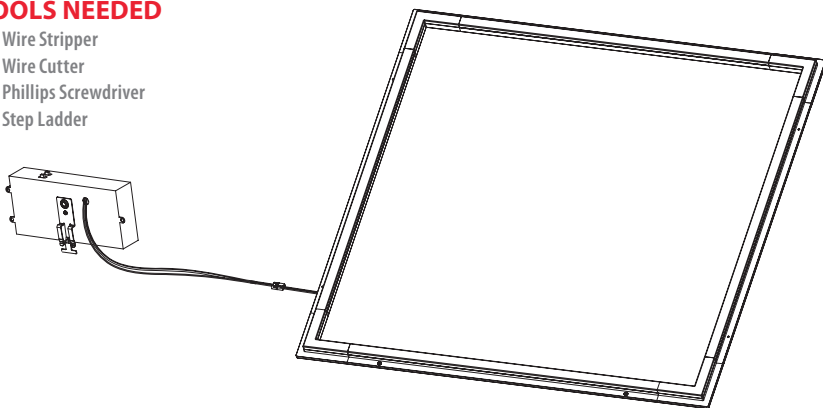
Ordering Code: VLF Series

WHAT COMES IN THE BOX

- (2) L Style bars
- (2) Straight bars
- (1) LED Driver
- (1) Grid mounting clip and screw
- (3) Wire nuts
- (1) Split snap bushing
- (1) Installation instructions

TOOLS NEEDED

- Wire Stripper
- Wire Cutter
- Phillips Screwdriver
- Step Ladder



SAFETY INSTRUCTIONS AND WARNINGS

When using electrical equipment, basic safety precautions should always be observed.

Read and follow all safety instructions.

- Installation should only be conducted by a qualified electrician in accordance with NEC and any relevant local building codes.
- Risk of fire or electric shock. Fixture installation requires knowledge of luminaires electrical systems. If not qualified, do not attempt installation. Contact a qualified electrician.
- Be certain electrical power is OFF before and during installation and maintenance.
- Fixtures must be connected to a wiring system with an equipment-grounding conductor.
- Make sure the supply voltage is the same as the rated luminaire fixtures voltage.
- Only those open holes indicated in the photographs and/or drawings may be made or altered as a result of this kit strip installation. Do not leave any other open holes in an enclosure of wiring or electrical components.
- To prevent wiring damage or abrasion, do not expose wiring to edges of sheet metal or sharp objects.
- Suitable for damp locations.

INSTALLATION

BEFORE BEGINNING INSTALLATION, TURN OFF POWER AT THE CIRCUIT BREAKER.

- CCT SLIDE SWITCH SETTINGS

5000K	4000K	3500K
-------	-------	-------

* **Note:** CCT default setting set to 4000K.
- WATTS SLIDE SWITCH SETTINGS 2' X 2'

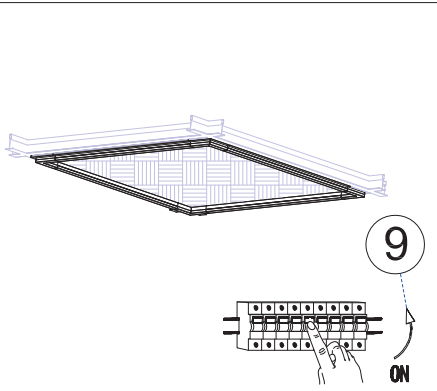
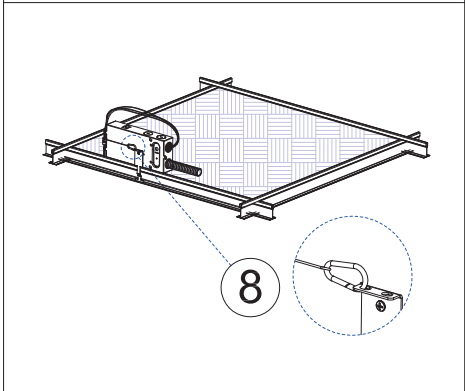
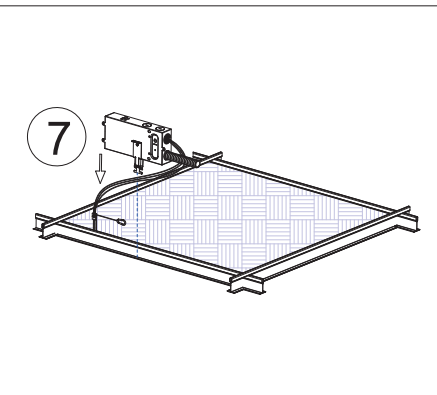
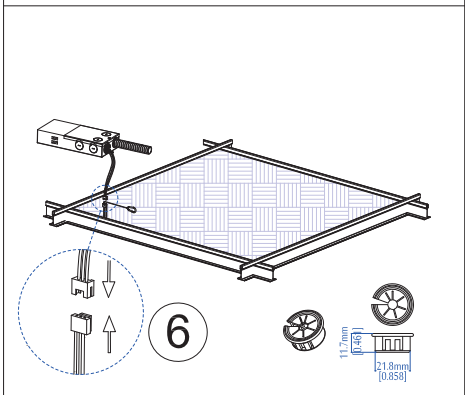
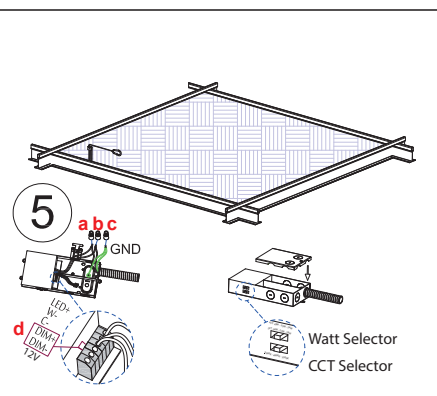
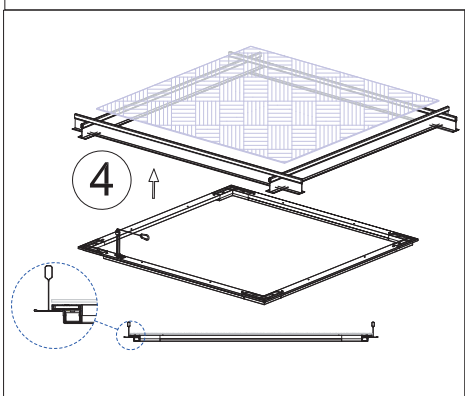
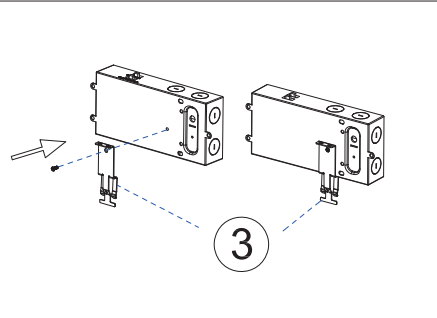
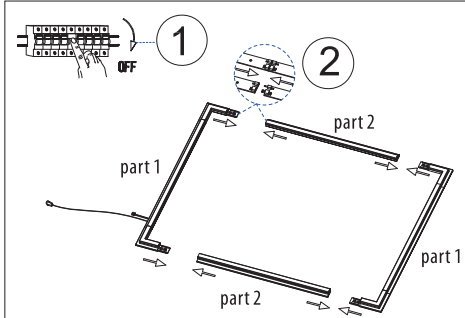
36W	27W	18W
-----	-----	-----

* **Note:** Watts default setting set to 36W.
- WATTS SLIDE SWITCH SETTINGS
2' X 4'

45W	35W	24W
-----	-----	-----

* **Note:** Watts default setting set to 50W.
- Unbox and inspect the Vivid LED Frame to understand it's components.
 - Turn off power at the electrical panel, refer to ①.
 - Assemble the frame by connecting the two L style bars (part 1) to the straight bars (part 2), refer to ②.
 - Lock the grid mounting clip on driver junction box with screw, refer to ③.
 - Select the preferred wattage and color temperature by adjusting the slide switches located on the driver.
 - Make wiring connections to the driver with wire nuts, following the guidelines below, refer to ⑤.
 - Connect the neutral (white) line to AC-N (white) with wire nut, refer to ⑤a.
 - Connect the live power (black) line to AC-L (black) with wire nut, refer to ⑤b.
 - Connect the green ground to green line with wire nut, refer to ⑤c.
 - If 0 -10V dimming is required, insert incoming dimming DIM+(Purple), and DIM- (Gray/ Pink) wires from dimmer to the fixture drivers' connectors marked as DIM+ and DIM-, refer to ⑤d.

Follow dimmer manufacturers instruction.
 - Raise the assembled fixture above the grid, then lower it until it rests between the t-grid and tile, refer to ④.
 - Punch the knockout, insert the provided snap bushing into the knockout to protect the wires, then connect the female and male DC connectors, refer to ⑥.
 - Clip the driver to the tgrid close to the fixture power cord, refer to ⑦.
 - Connect the safety cable on mounting clip, refer to ⑧.
 - Your installation is complete. Restore power, refer to ⑨.



Thank you for choosing

LITETRONICS®

6969 W. 73rd Street
Bedford Park, IL 60638

www.Litetronics.com

CustomerService@Litetronics.com or 1-800-860-3392



The information and product specifications contained in these instructions are based upon data believed to be accurate at the time of printing. This information is subject to change without notice and without incurring liability. If you have questions regarding specific product details, please contact us at 800-860-3392 or via email at customerservice@litetronics.com.

To check for an updated version of these instructions, please visit www.litetronics.com.

9/3/24 - V1.1