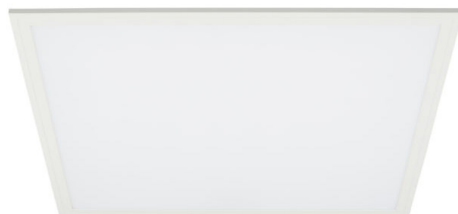


# Dimmer Compatibility

## LED Light Panel



DIMMER BRAND	MODEL #	LOAD	PT LIGHT PANEL (0-10V DIM)*		
			30W	36W	50W
			.32A	.39A	.54A
Lutron	NTSTV-DV	8A	1-22	1-19	1/13
Lutron	NFTV	5A	1-14	1-12	1-8
Lutron	DVTV	16A (Requires Power Pack PP-DV)	1-45	1-38	1-27
Lutron	DVSCTV	16A (Requires Power Pack PP-DV)	1-45	1-38	1-27
Lutron	DVSTV	8A	1-22	1-19	1-13
Lutron	DVSCSTV	8A	1-22	1-19	1-13
Lutron	MS - Z101	8A	1-22	1-19	1-13
Lutron	MS - Z101 - V	8A	1-22	1-19	1-13
Lutron	RMJ-ST-DV-B	5A	1-14	1-12	1-8
Lutron	RMJS-8T-DV-B	8A	1-22	1-19	1-13
Lutron	FCJS-010	1A or 6mA of 0-10V	2	2	1
Leviton	DS710-10Z	1200VA@120V, 1500VA@277V	1-28	1-24	1-17
Leviton	IP710-DLX	1200VA@120V, 1500VA@277V	1-28	1-24	1-17
Leviton	IP710-DLZ	1200VA@120V, 1500VA@277V	1-28	1-24	1-17
Leviton	IP710-LFZ	1200VA@120V, 1500VA@277V	1-28	1-24	1-17
Leviton	AWRMG-7DW	1920W@120V, 4432W@277V	1-45	1-38	1-27
Leviton	AWSMT-7DW	1920W@120V, 4432W@277V	1-45	1-38	1-27
Leviton	AWSMG-7DW	1920W@120V, 4432W@277V	1-45	1-38	1-27
Eaton ( Cooperindustries, Cooper Wiring Devices )	DF10P	1200W@120V, 1660W@277V	1-28	1-24	1-17
Eaton ( Cooperindustries, Cooper Wiring Devices )	SF10P	1200W@120V, 1660W@277V	1-28	1-24	1-17
Legrand ( Pass & Seymour )	H4FBL3PTW	10A@120V, 5A@277V	1-28	1-24	1-17
Legrand ( Pass & Seymour )	WS4FBL3PTC	10A@120V, 5A@277V	1-28	1-24	1-17
Legrand ( Pass & Seymour )	WS4FBL3PW	10A@120V, 5A@277V	1-28	1-24	1-17
Philips Lighting Controls	SR1200ZTUNV	1200VA@120V, 1500VA@277V	1-28	1-24	1-17

(Minimum number of lamps per dimmer - maximum number of lamps per dimmer)

\* LITETRONICS tests up to 3 lamps per dimmer;  
maximum number of lamps calculated on the basis of capacity of dimmer.

6969 W. 73rd Street Bedford Park, Illinois 60638 | 800-860-3392 | customerservice@litetronics.com

3/11/20 - V1

**LITETRONICS**<sup>®</sup>

www.Litetronics.com